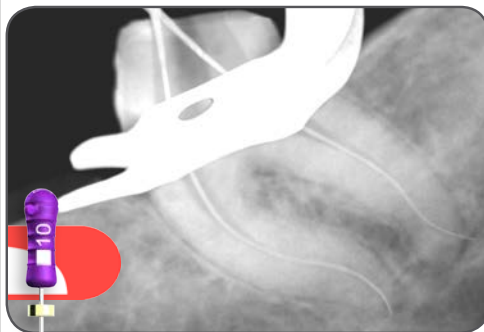
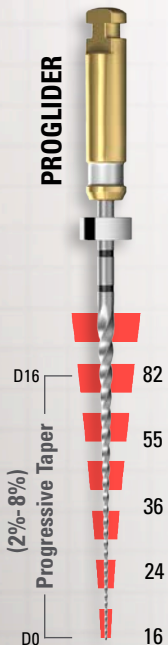


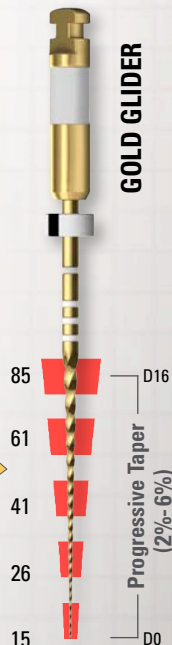
GLIDE PATH MANAGEMENT

PROGLIDER



SECURE THE CANAL

GOLD GLIDER



ROTARY

M-Wire Metallurgy
300 RPM / 4-5.2 Ncm

CHOOSE YOUR PATH

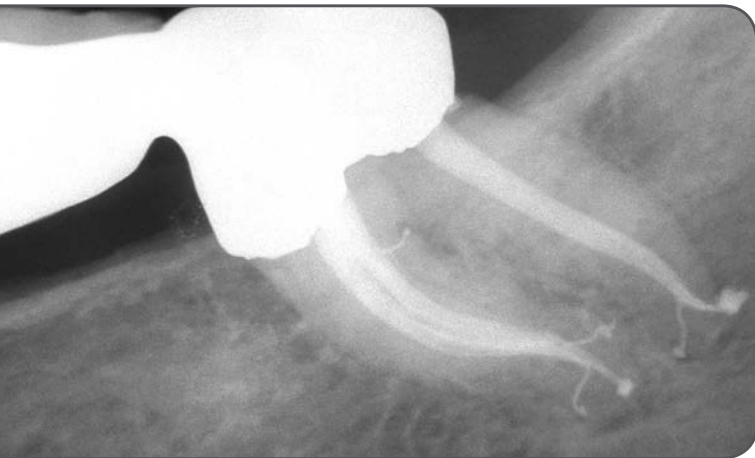
OR

RECIPROICATION

Gold-Wire Metallurgy
150 CCW : 30 CW

MECHANICAL ADVANTAGES

Follow & Expand Original Anatomy • Decrease Postoperative Pain
Improve Shaping Results • Reduce Chair Time • Rotary OR Reciprocation



A smooth, reproducible glide path promotes shaping canals, 3D cleaning, and filling root canal systems.

- Prepare straightline access to canal orifice.
- In the presence of a viscous chelator, explore the canal up to a size 10 hand file.
- Establish working length, confirm patency and verify a smooth, reproducible glide path.
- In preparation for using the selected Glider, set the motor to manufacturer prescribed settings.
- In the presence of NaOCl, “float” the selected Glider into the secured canal and passively “follow” the glide path.
- Continue with the selected Glider in one or more passes until the full working length is reached.
- Upon removing the selected Glider, irrigate the expanded glide path, recapitulate and re-irrigate.
- Reconfirm the working length before shaping the canal with rotary or reciprocating mechanical files.

The metallurgically-enhanced heat treatment of ProGlider and Gold Glider has been shown to significantly improve flexibility and the resistance to cyclic fatigue.



ADVANCED  ENDODONTICS®

Clifford J. Ruddle DDS FACD FICD
(800) 753-3636 • (805) 964-8838 • www.endoruddle.com