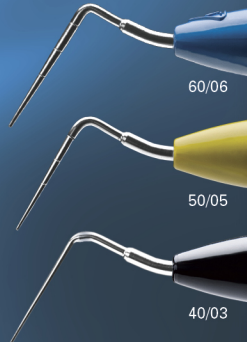


CALAMUS[®] PACK TECHNIQUE CARD



The Calamus Pack handpiece, in conjunction with a pre-selected Electric Heat Plugger (EHP), is utilized to thermosoften and compact warm gutta percha and sealer into the root canal system.

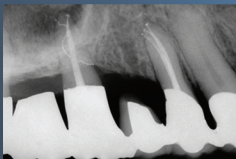


The Calamus Dual Obturation System combines a Calamus Pack handpiece for downpacking with the Calamus Flow handpiece for backpacking.



Cone-Fit & Plugger Selection

- Fit a nonstandardized, fully tapered master cone in a fluid-filled canal that visually goes to the working length, exhibits apical tugback and is confirmed radiographically.
- Trim the master cone back to the physiological terminus of the canal based on the paper point drying technique.
- Select a larger size manual plugger that will work passively in the coronal 1/3 of the canal, a medium size manual plugger that will work passively in the middle 1/3 of the canal, and when necessary, a smaller size manual plugger that will work passively to within 5 mm of the canal terminus.
- Select the EHP that will efficiently work, yet loosely fit, 5 mm short of working length.
- Minimally “butter” the master cone with sealer and gently insert it to length.



CALAMUS® PACK TECHNIQUE CARD

Downpack Technique: Vertical Condensation*

- Touch the blue circumferential activating cuff on the Calamus Pack handpiece and use the EHP to sear off the master cone at the level of the orifice. Note that the recommended temperature setting is 350°C.
- Select the larger size, prefit manual plugger and step its working end around the circumference of the canal using short, firm strokes to move gutta percha laterally and apically. Firmly press against this thermosoftened mass for 5 seconds to generate a wave of condensation.
- Activate the EHP and plunge 3 to 4 mm into the previously compacted material. Deactivate the EHP, hesitate for 1 second, then remove the cooling instrument along with a “bite” of gutta percha.
- Select the medium size, prefit manual plugger and step its working end around the circumference of the canal using short, firm strokes to, again, compact gutta percha. Firmly press for 5 seconds.
- Activate the EHP and plunge deeper, another 3 to 4 mm, into the gutta percha, deactivate, hesitate for 1 second, then remove the cooling EHP along with another bite of gutta percha.
- Select the small size, prefit manual plugger and step its working end around the circumference of the canal using short, firm strokes to, again, compact gutta percha. Firmly press against this thermosoftened mass for 5 seconds to apically “cork” the canal.

When the downpack is complete, then select the Calamus Flow handpiece to optimally “backpack” the canal.

** Please visit www.endoruddle.com to review the complete DFUs for the Continuous Wave and/or Hybrid downpack techniques.*



See Directions For Use

ADVANCED  ENDODONTICS®

Clifford J. Ruddle DDS FACD FICD

(800) 753-3636 • (805) 964-8838 • www.endoruddle.com