

ENDO ACTIVATOR™

Technique Card



PRODUCT APPLICATIONS

- Debridement and disruption of the smear layer and biofilm
- Placement of calcium hydroxide and MTA around root curvatures
- Removal of residual obturation materials during retreatment

ACTIVATE YOUR ENDODONTICS

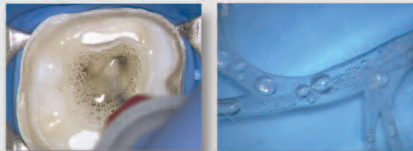
PRODUCT FEATURES

EndoActivator Tips

- Easy snap-on/snap-off design
- Strong, flexible, medical-grade polymer composition
- Color-coded by size
- 22 mm lengths with depth gauge rings at 18, 19 and 20 mm

Handpiece / Driver

- Contra-angled design for easy access to posterior teeth
- 3-speed sonic motor provides options of 2,000, 6,000 and 10,000 cpm
- Ergonomic, cordless, and battery-operated handpiece



U.S. and International Patents Pending

ENDO ACTIVATOR™

SAFE • EFFECTIVE • SIMPLE

TECHNIQUE SEQUENCE*

- Prepare canal to produce a fully tapered shape
- Fill pulp chamber with NaOCl, EDTA, or other final rinse solution
- Select the Activator that manually fits loosely within 2 mm of working length
- Place the barrier sleeve over the Driver to protect the entire handpiece
- Attach the Activator over the barrier-protected Driver
- Place the attached Activator tip into the prepared root canal
- Depress the ON/OFF switch to activate solution
(Note: Switch defaults to 10,000 cpm, as indicated for cleaning procedures)
- Use a pumping action to move the Activator in short, 2-3 mm vertical strokes
- Hydrodynamically agitate the intracanal solution for 30-60 seconds
- Irrigate, then use intracanal suction to eliminate loose debris
- Repeat the above steps for each intracanal irrigant used

*Sequence for cleaning root canal systems.
For other applications, see Directions For Use.



See Directions For Use

ADVANCED  ENDODONTICS®

Clifford J. Ruddle DDS FACD FICD

(800) 753-3636 • (805) 964-8838 • www.endoruddle.com